

JINGLE BELLS

ARRANGED BY CHRISTOPH MIEBACH

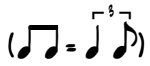
STANDARD TUNING

① = E ④ = A

② = G ⑤ = E

③ = D ⑥ = B

♩ = 100



INTRO

RUBATO

LET RING

EL. 86.

1 2 3 4

<4> <4> <4> / <4> <3.2> <5> <3.2> (<3.2>)

CHORUS

♩ = 140

GROOVE!

LET RING

5 6 7 8

<4> <4> <4> <4> <4> <4> <4> <4> X

3 3 3 3 3 3 3 3 3 5 5 2 5

1.

2.

LET RING

9 10 11 12 13 14

<5> <5> <5> <5> <4> <4> <4> <4> <4> <3.2> <3.2> <4> <3.2> <3.2> <3.2> <4> <3.2> <3.2> <4> <3.2> <5>

3 3 3 3 3 0 3 0 2 3 3 3 3

VERS

LET RING

15 16 17 18

<5> <4> <3.2> <5> <5> <5> <5> <4> <3.2> <5> 3 5

1.

2.

LET RING

CHORUS

LET RING

1.

LET RING

2.

(♩ = ♩)

♩ = 100

RITARDANDO



LET RING